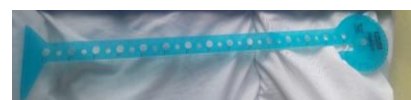


YEAR 9 TEXTILES HOMEWORK: EQUIPMENT AND TECHNIQUES

- 1) Use a ruler to draw a neat line from the name of the equipment to the correct picture.



Bamboo knitting needle	Beading needle	Pinking shears	Presser foot	Pom-pom maker	Needle threader	Rule tool	Water erasable pen	Tape measure
------------------------	----------------	----------------	--------------	---------------	-----------------	-----------	--------------------	--------------



- 2) Complete the chart below by suggesting a suitable piece of equipment or process. *An example has been done for you.*

	Process	Equipment
Example	<i>Drawing a large circular paper pattern for a whole Victoria sponge cake.</i>	<i>Rule tool.</i>
1	Drawing a circular paper pattern piece for a burger and bun.	
2	Drawing a straight line.	
3	Measuring the circumference of a swiss roll.	
4		Set square.
5		Tailors' chalk or water erasable pen.
6	Threading a beading needle.	
7	Cutting a crinkled edge for lettuce leaves.	
8		Pom-pom maker.

- 3) Give three tips / pieces of advice for using pins safely.

1.
2.
3.

- 4) Explain why textile products are often sewn inside out and then turned through the right way around.

.....

.....